



## REGIONAL SPECIALISED METEOROLOGICAL CENTRE -TROPICAL CYCLONES, NEW DELHI TROPICAL WEATHER OUTLOOK

**DEMS-RSMC TROPICAL CYCLONES NEW DELHI DATED 10.08.2025**

**TROPICAL WEATHER OUTLOOK FOR THE NORTH INDIAN OCEAN (THE BAY OF BENGAL AND THE ARABIAN SEA) VALID FOR THE NEXT 168 HOURS ISSUED AT 0600 UTC OF 10.08.2025 BASED ON 0300 UTC OF 10.08.2025.**

### **BAY OF BENGAL:**

A Low Pressure area is likely to form northwest & adjoining westcentral Bay of Bengal around 13th August, 2025.

Scattered low and medium clouds with embedded intense to very intense convection lay over central Bay of Bengal and north Andaman Sea. Scattered low and medium clouds with embedded moderate to intense convection lay over the rest of the Bay of Bengal and south Andaman Sea.

### **\*PROBABILITY OF CYCLOGENESIS (FORMATION OF DEPRESSION) DURING NEXT 168 HRS:**

24 HOURS	24-48 HOURS	48-72 HOURS	72-96 HOURS	96-120 HOURS	120-144 HOURS	144-168 HOURS
NIL	NIL	NIL	NIL	NIL	NIL	NIL

**\*NOTE: EVERY 24HR FORECAST IS VALID UPTO 0300 UTC (0830 IST) OF NEXT DAY**

### **ARABIAN SEA:**

An upper air cyclonic circulation lay over northeast Arabian Sea and adjoining Gujarat coast at 0000 UTC and persisted over the same region at 0300 UTC of today, the 10th August, 2025.

Scattered low and medium clouds with embedded moderate to intense convection lay over eastcentral & southeast Arabian Sea off Konkan - Goa – Karnataka – Kerala coasts, Lakshadweep Islands area. Isolated weak to moderate convection lay over the rest of the Arabian Sea and Comorin area.

### **\*PROBABILITY OF CYCLOGENESIS (FORMATION OF DEPRESSION) DURING NEXT 168 HRS:**

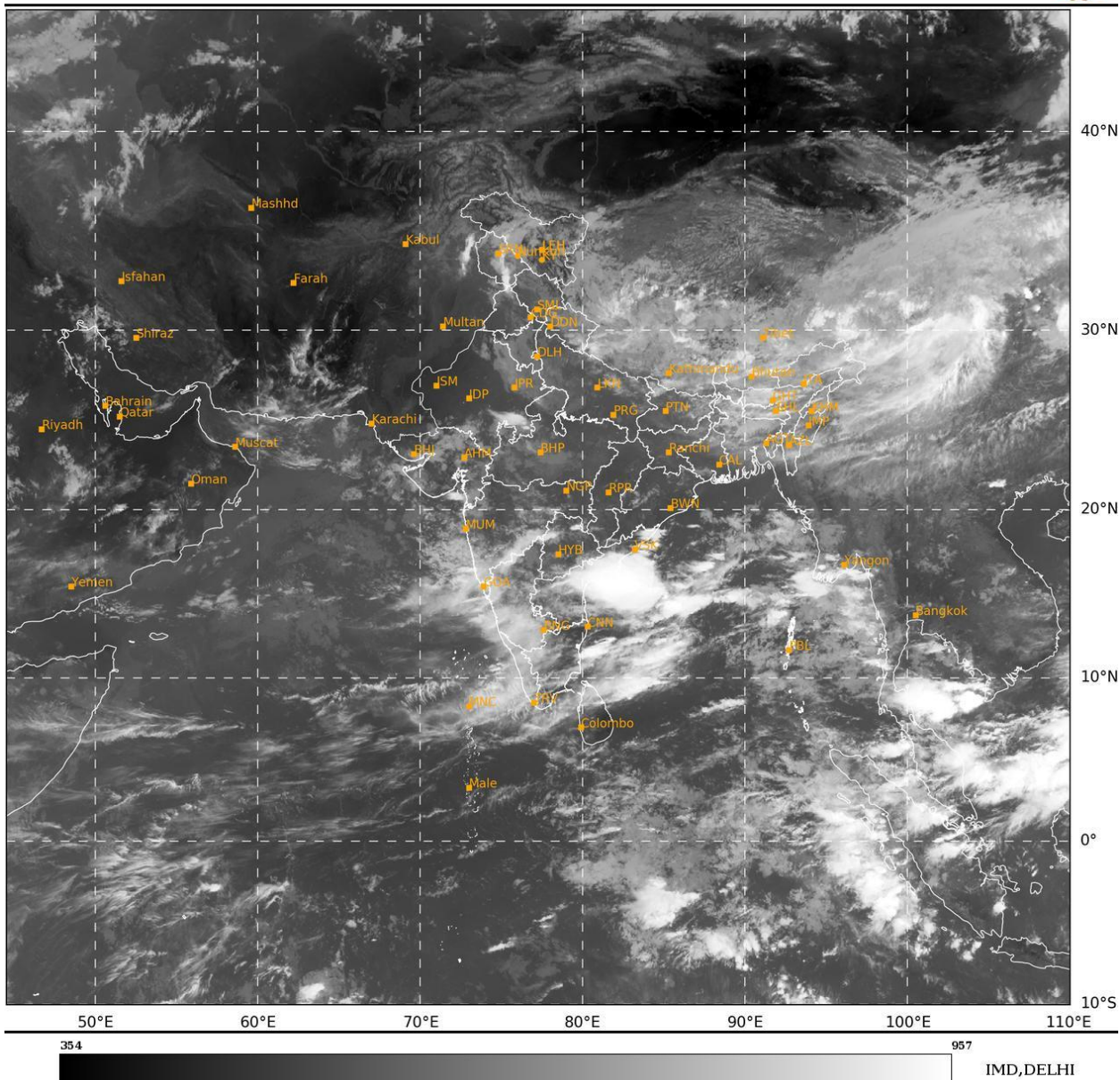
24 HOURS	24-48 HOURS	48-72 HOURS	72-96 HOURS	96-120 HOURS	120-144 HOURS	144-168 HOURS
NIL	NIL	NIL	NIL	NIL	NIL	NIL

**\*NOTE: EVERY 24HR FORECAST IS VALID UPTO 0300 UTC (0830 IST) OF NEXT DAY**

**REMARKS:** NIL

SAT : INSAT-3DR IMG  
IMG\_TIR1 10.8 um  
LIC Mercator

10-08-2025/(0345 to 0412) GMT  
10-08-2025/(0915 to 0942) IST



Cloud distribution: (a) Isolated: <25%, Scattered:25-50%, Broken: 51-75%, Solid:>75%, Convection Intensity: (a) Weak: Cloud Top Temperature(CTT)>-25°C,(b)Moderate:CTT:-25°Cto-40°C,(c)Intense:CTT: -41°Cto -70°Cand(d)Very Intense::Less than -70°C  
PROBABILITYOFCYCLOGENESIS(FORMATIONOFDEPRESSION):NIL:0%,LOW:1-33%,MODERATE:34-66%ANDHIGH:67-100%  
ThisisaguidanceBulletinforWMO/ESCAPPanelMembercountries.VisitrespectiveNationalwebsitesforCountryspecificBulletins